



Sussidiario per immagini



ARASAAC



Autore dei simboli: Sergio Palao. Per conto di ARASAAC (<http://www.arasaac.org/>) Con Licenza: CC(BY-NC-SA)

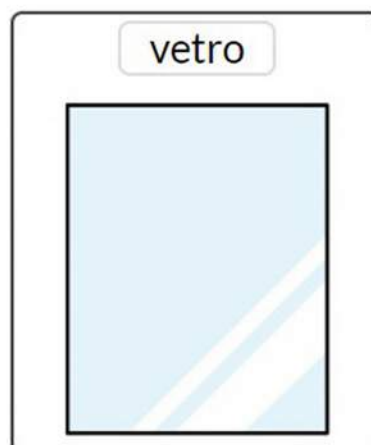
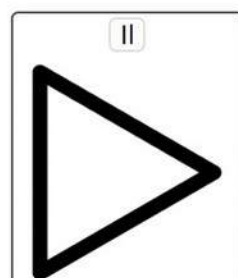


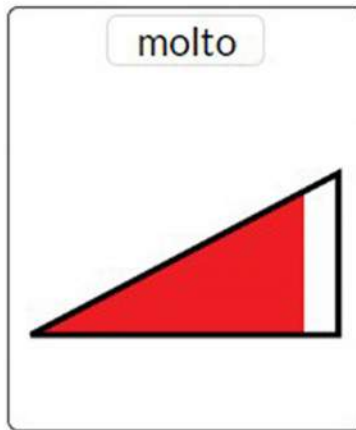
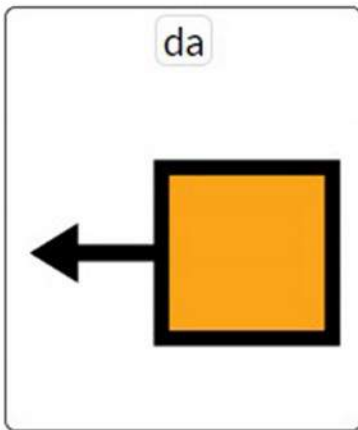
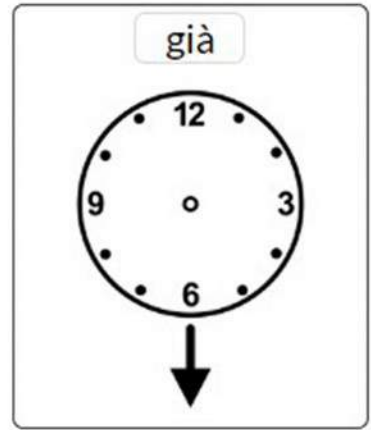
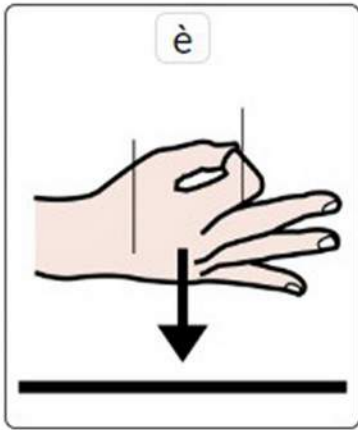
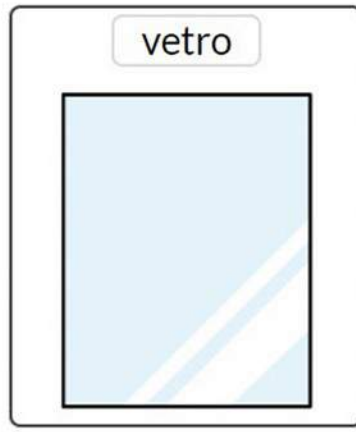
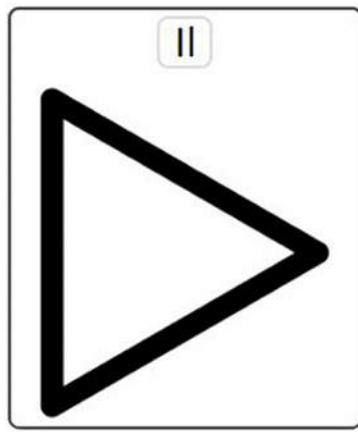
Titolo Il Vetro

Progetto TFA VERONA - gruppo 9

Ordine Scuola Secondaria di Primo Grado

Area Disciplinare Tecnologia

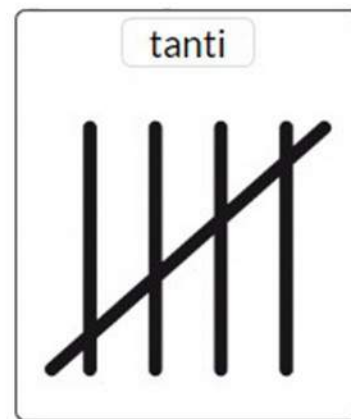
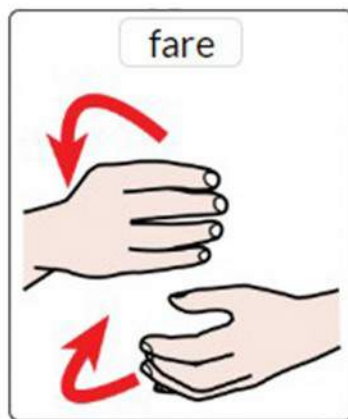
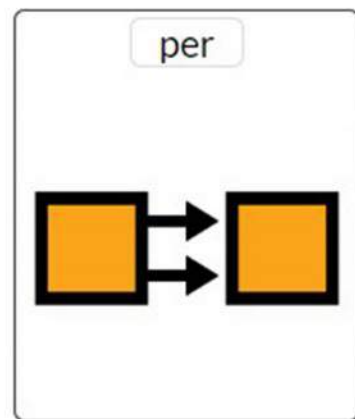
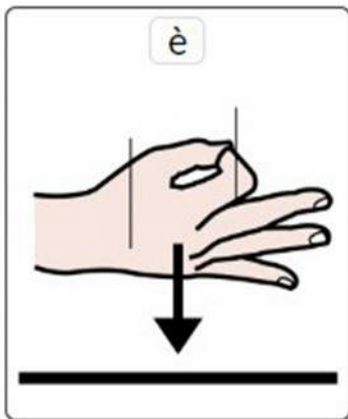
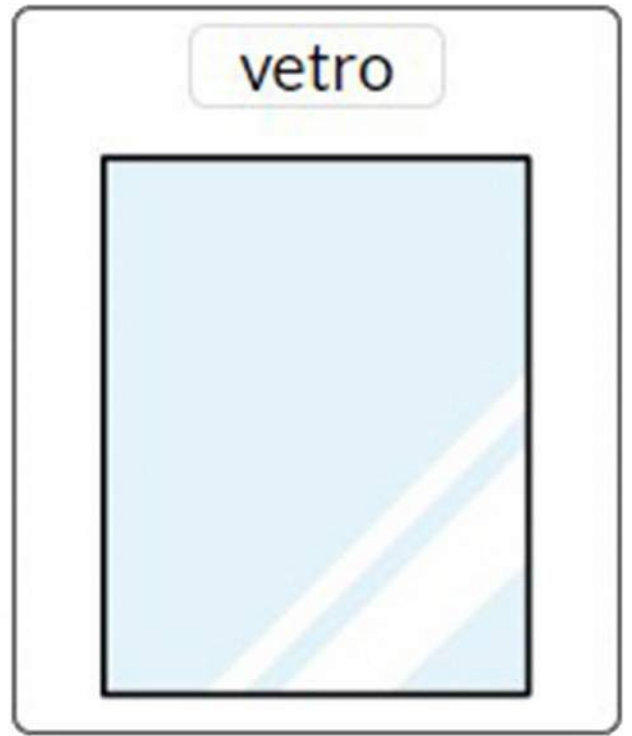
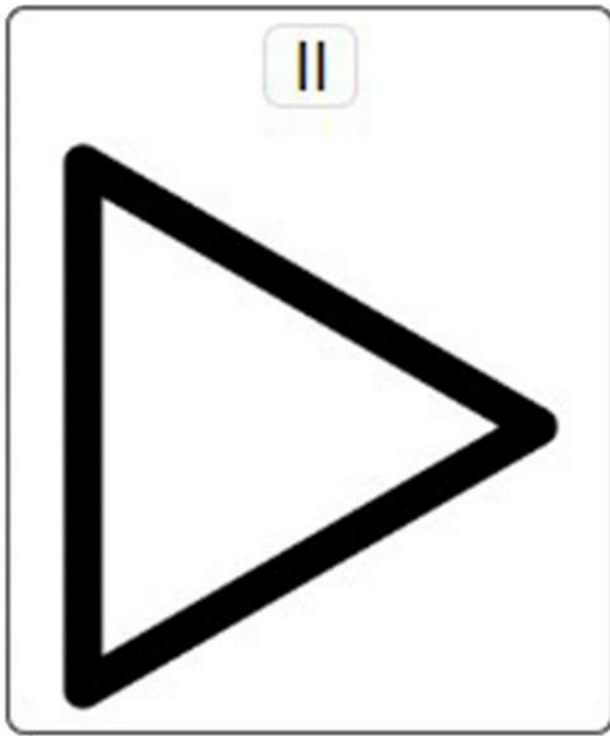


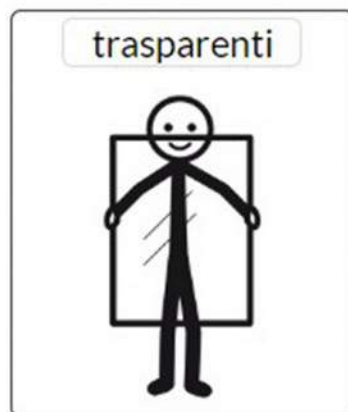
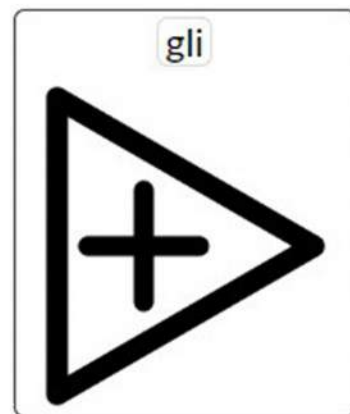
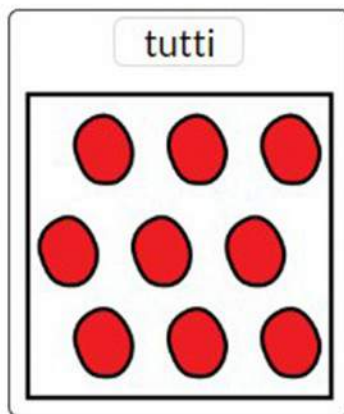
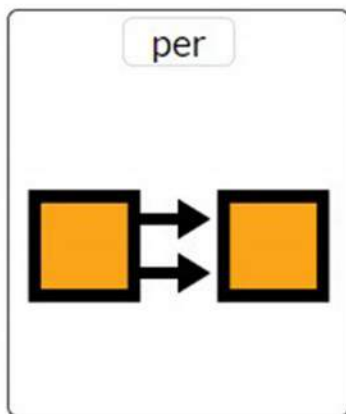
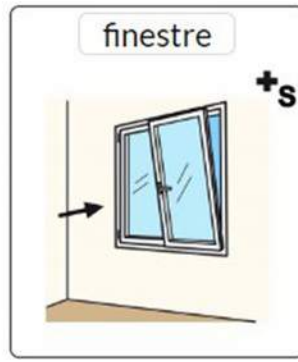
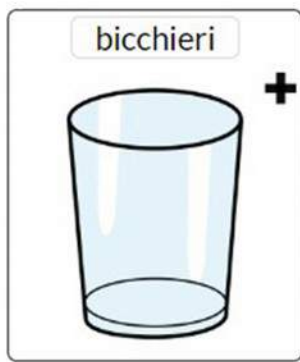


1600

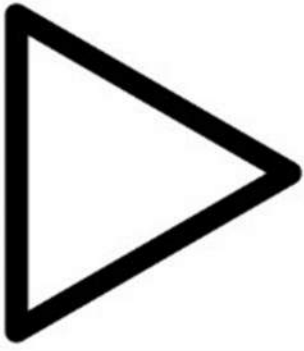


2000





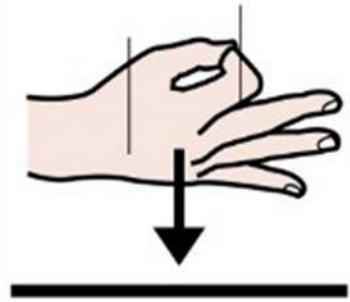
il



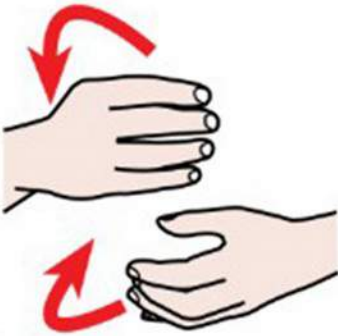
vetro



è



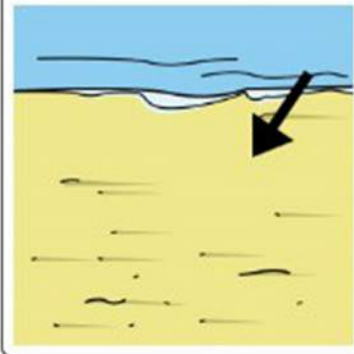
fatto



con



sabbia



pietre



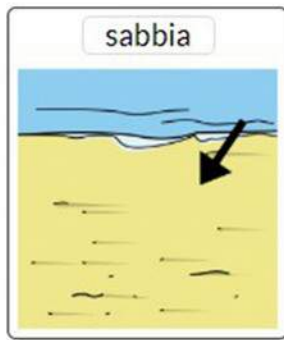
e



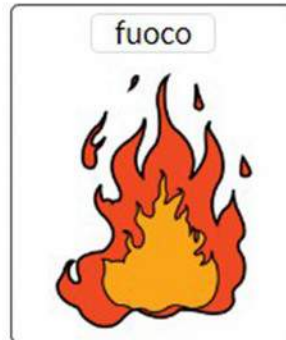
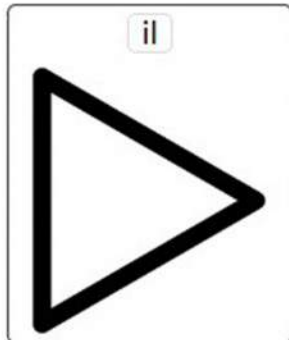
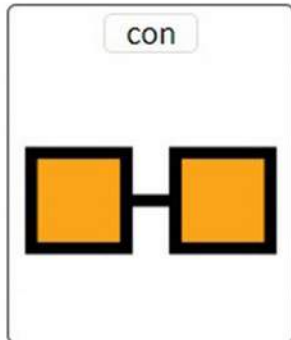
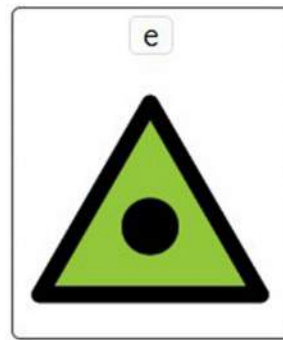
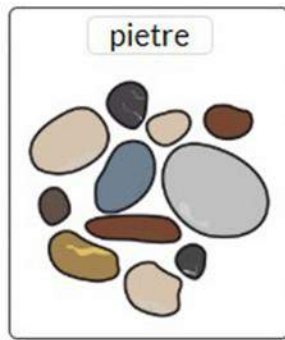
sostanze chimiche



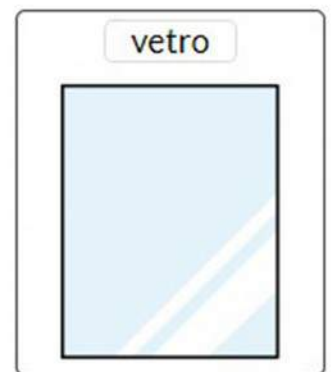
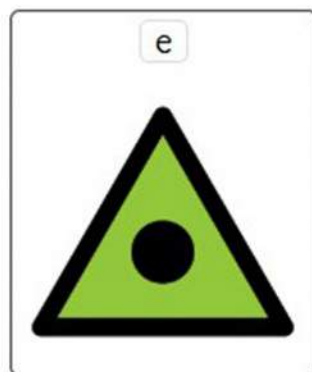
,

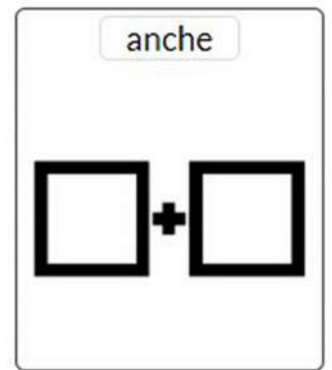
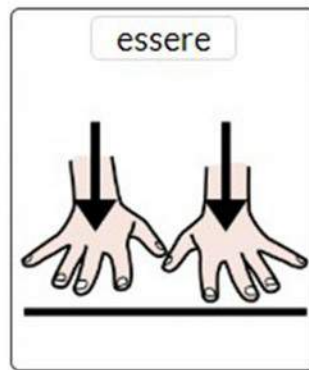
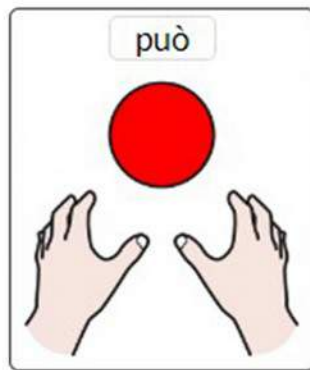
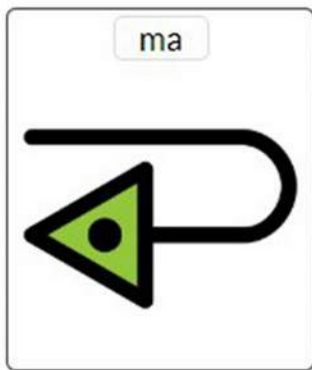
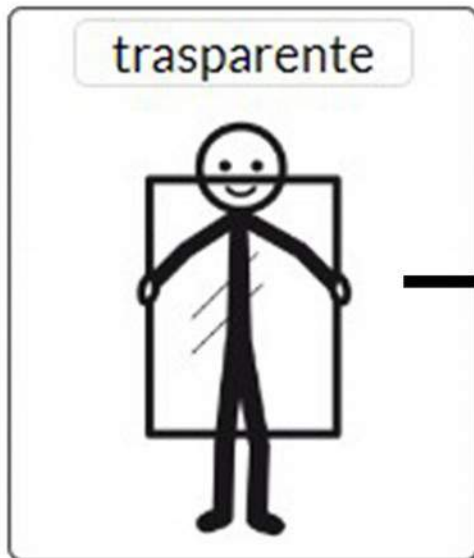
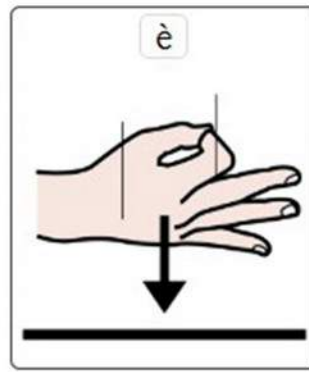
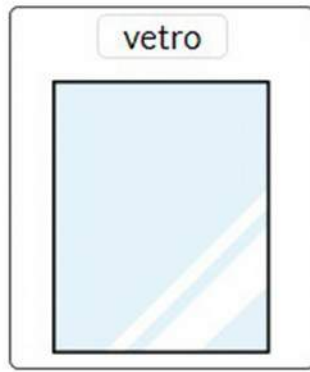
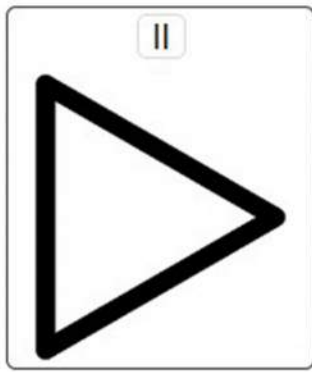


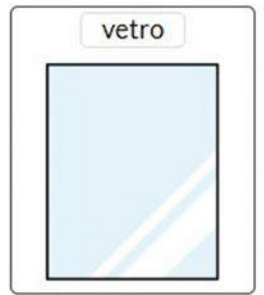
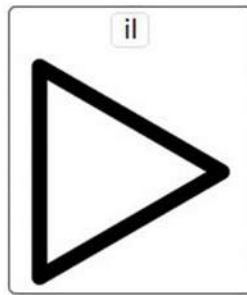
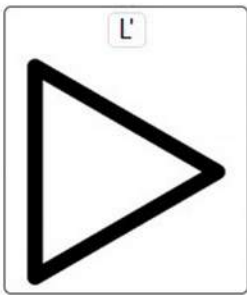
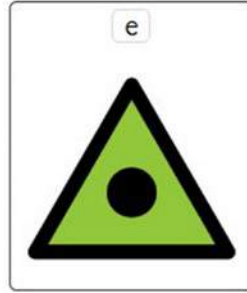
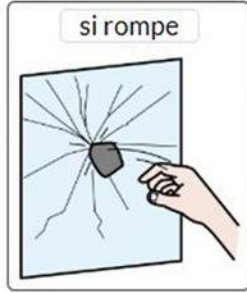
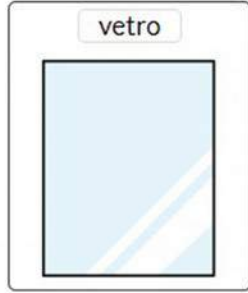
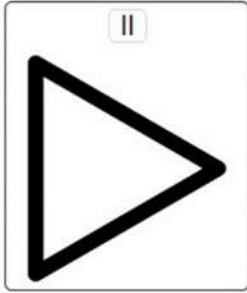
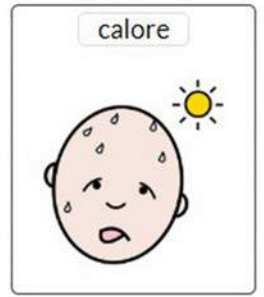
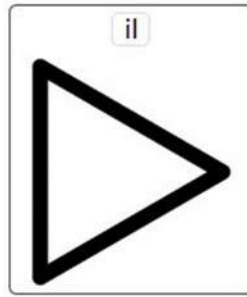
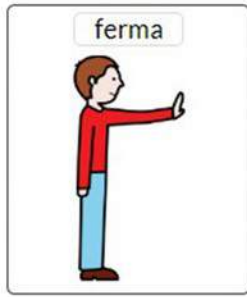
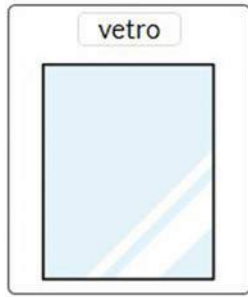
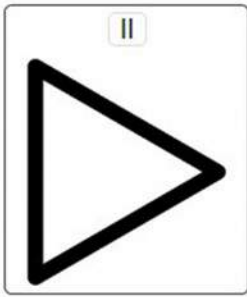
,



,



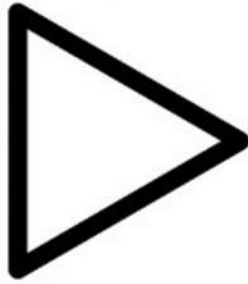




Quando



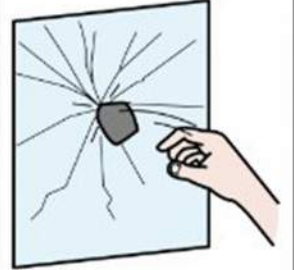
il



vetro



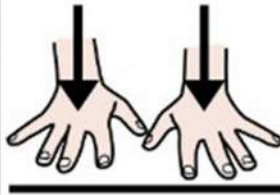
si rompe



deve



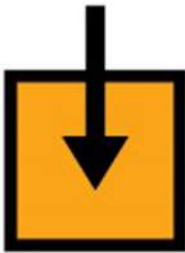
essere



buttato



nel



bidone



verde



fine

