



Autore dei simboli: Sergio Palao. Per conto di: ARASAAC (<http://catedu.es/arasaac/>). Con Licenza: CC(BY-NC-SA)

## Effetti demografici e produttivi della peste del trecento

---

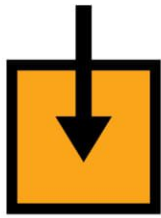
Progetto : CTS - Novara  
Ordine di Scuola : Scuola Secondaria Secondo Grado  
Area disciplinare : Storia  
Realizzato da : Liceo Scientifico Antonelli

Difficoltà Apprendimento : Studente Straniero

studenti stranieri NAI TERZA SUPERIORE



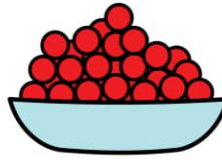
ANTICAMENTE



IN



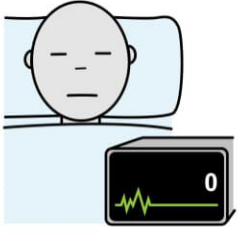
EUROPA



MOLTE



PERSONE



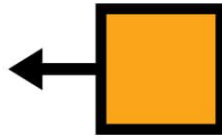
MORIRONO



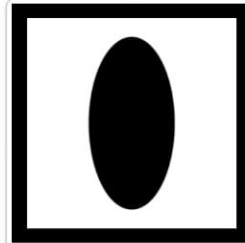
A



CAUSA



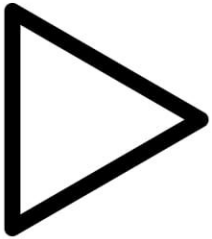
DI



UNA



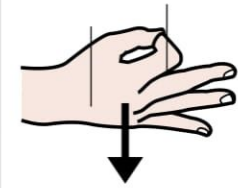
MALATTIA



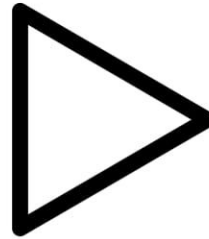
LA



MALATTIA



ERA



LA



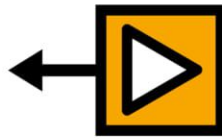
PESTE



A



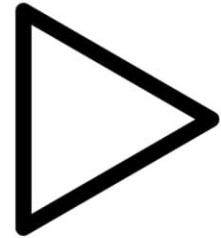
CAUSA



DELLA



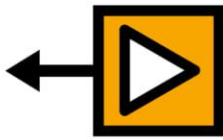
PESTE



IL



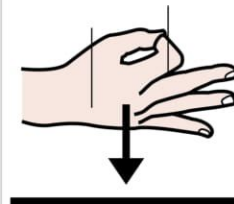
NUMERO



DELLA



POPOLAZIONE



ERA



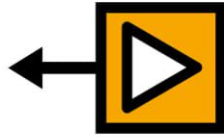
DIMINUITO



A



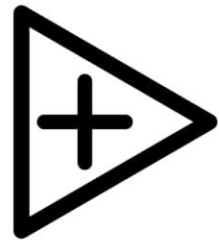
CAUSA



DELLA



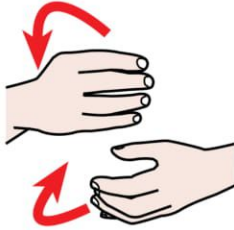
PESTE



GLI



AGRICOLTORI



COLTIVARONO



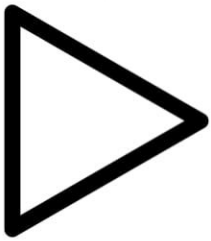
MENO



FRUMENTO



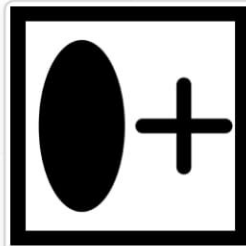
PERCHÉ



IL



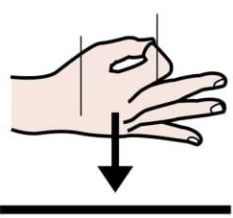
NUMERO



DELLE



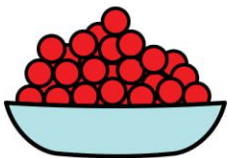
PERSONE



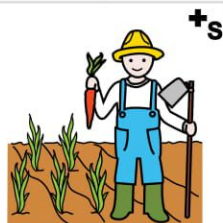
ERA



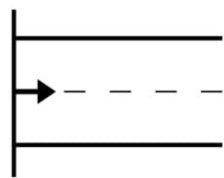
DIMINUITO



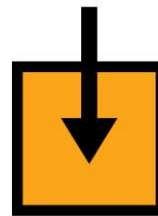
MOLTI



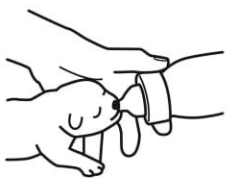
AGRICOLTORI



COMINCIARONO



AD



ALLEVARE



OVINI



E



BOVINI