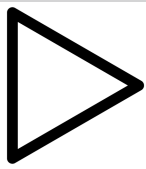


Il gusto

Progetto : CTS - Novara
Ordine di Scuola : Scuola Primaria
Area disciplinare : Scienze
Realizzato da : I.C. Duca D'Aosta

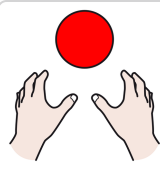
Difficoltà Apprendimento : ()



LA



BOCCA



PUÒ



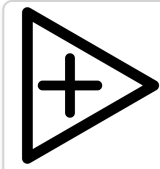
MASTICARE



E



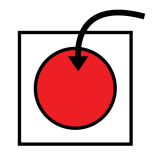
GUSTARE



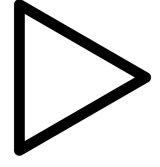
I



CIBI



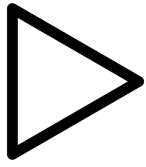
DENTRO



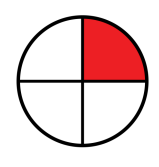
LA



BOCCA



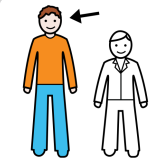
LA



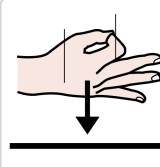
PARTE



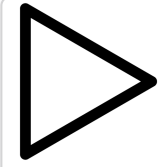
IN



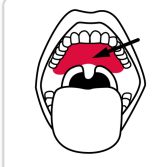
ALTO



È



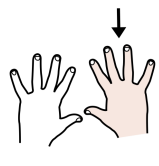
IL



PALATO



A



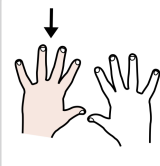
DESTRA



E



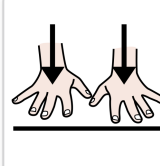
A



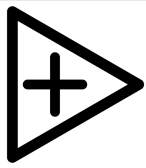
SINISTRA



CI



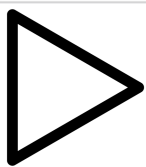
SONO



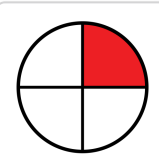
LE



GUANCE



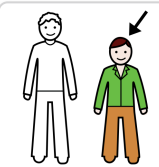
LA



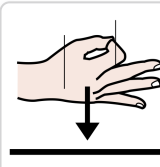
PARTE



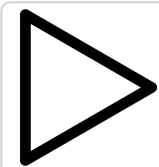
IN



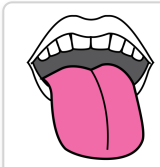
BASSO



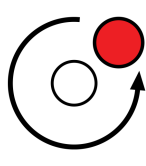
È



LA



LINGUA



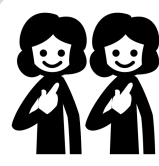
INTORNO



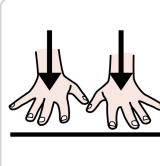
ALLA



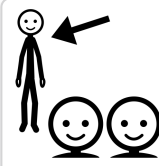
LINGUA



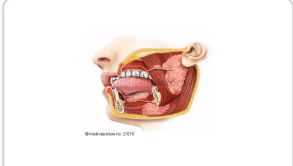
CI



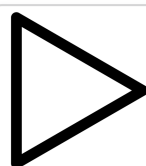
SONO



LE



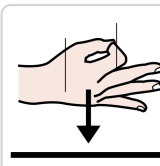
GHIANDOLE SALIVARI



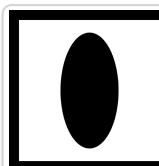
LA



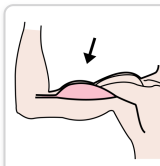
LINGUA



È



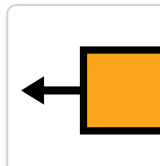
UN



MUSCOLO



COPERTO



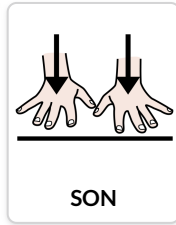
DI



PAPILLE GUSTATIVE



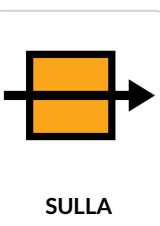
CHE



SON



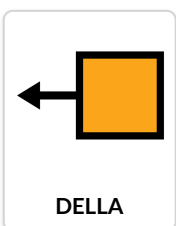
PALLINE



SULLA



PUNTA



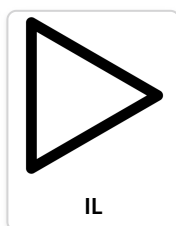
DELLA



LINGUA



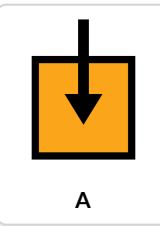
SI SENTE



IL



SAPORE DOLCE



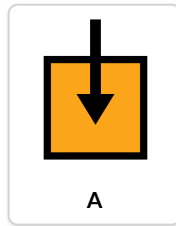
A



DESTRA



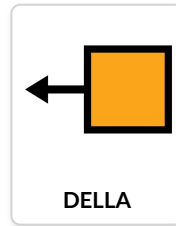
E



A



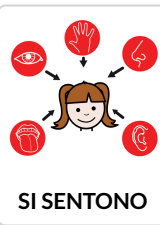
SINISTRA



DELLA



LINGUA



SI SENTONO



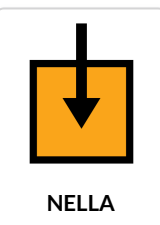
SAPORE ACIDO



E



SAPORE SALATO



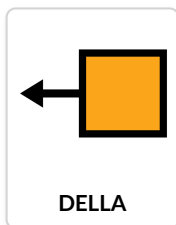
NELLA



PARTE



DIETRO



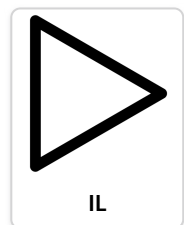
DELLA



LINGUA



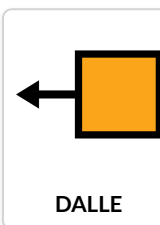
SI SENTE



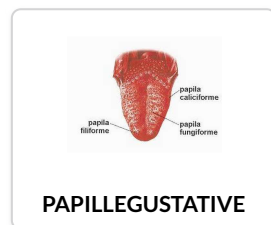
IL



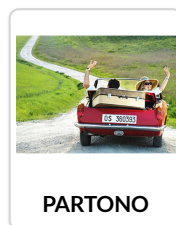
SAPORE AMARO



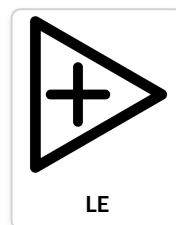
DALLE



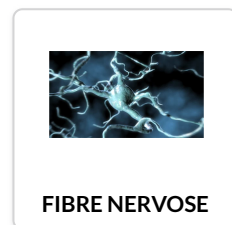
PAPILLEGUSTATIVE



PARTONO



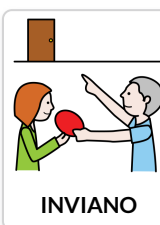
LE



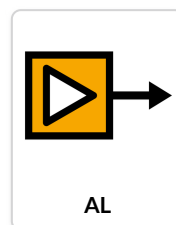
FIBRE NERVOSE



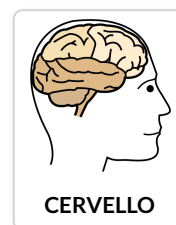
CHE



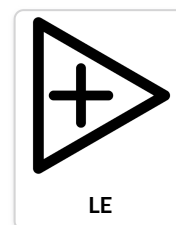
INVIANO



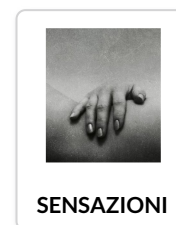
AL



CERVELLO



LE



SENSAZIONI



DEL



GUSTO.