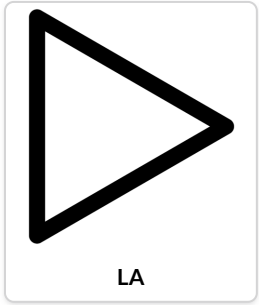


La Pianura 2

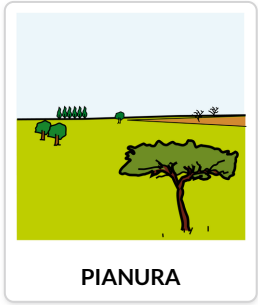
Progetto : CTS - Novara
Ordine di Scuola : Scuola Primaria
Area disciplinare : Geografia
Realizzato da : I.C. Cronilde Musso "Don Milani"

Difficoltà Apprendimento : Ritardo mentale

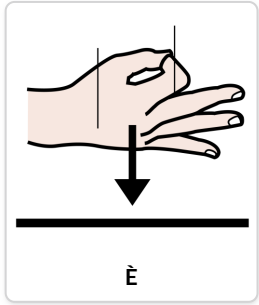
Alunno classe 3^a ritardo mentale medio, disturbo del linguaggio grave



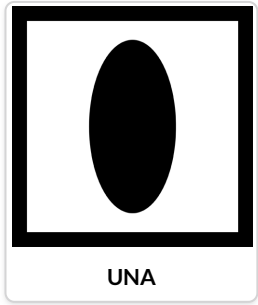
LA



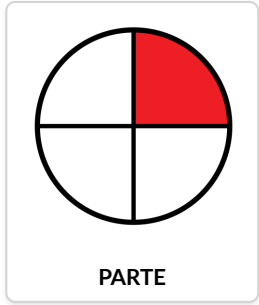
PIANURA



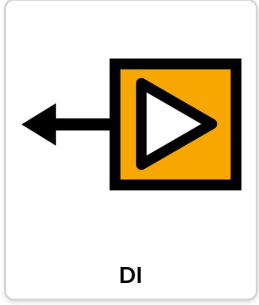
È



UNA



PARTE



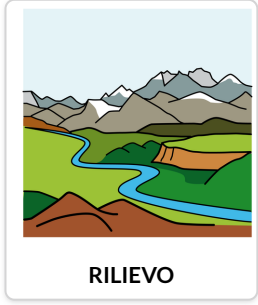
DI



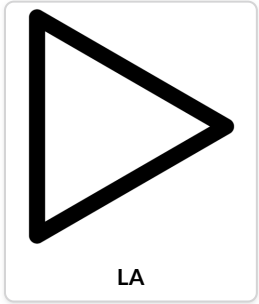
TERRA



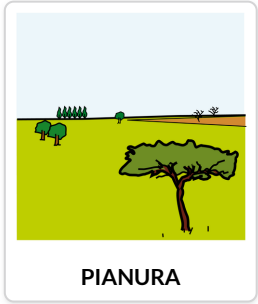
SENZA



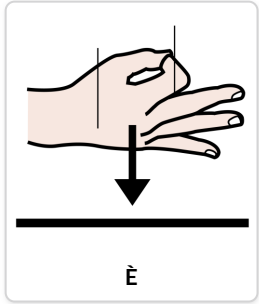
RILIEVO



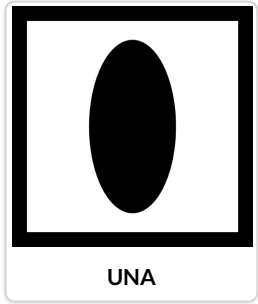
LA



PIANURA



È



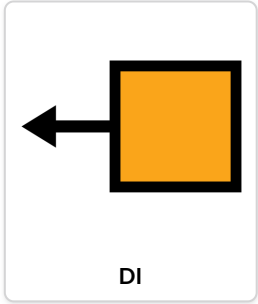
UNA



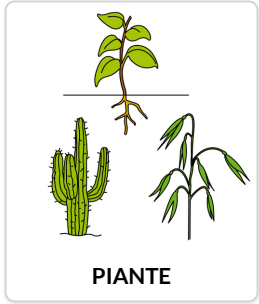
TERRA



RICCA



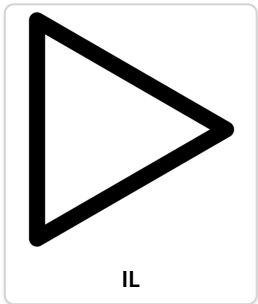
DI



PIANTE



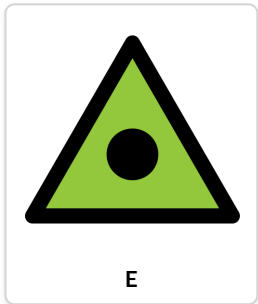
COME



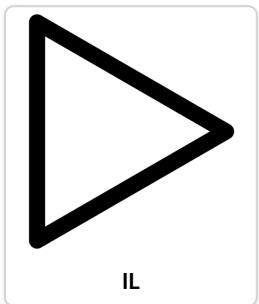
IL



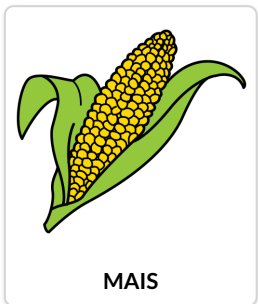
RISO



E



IL



MAIS

